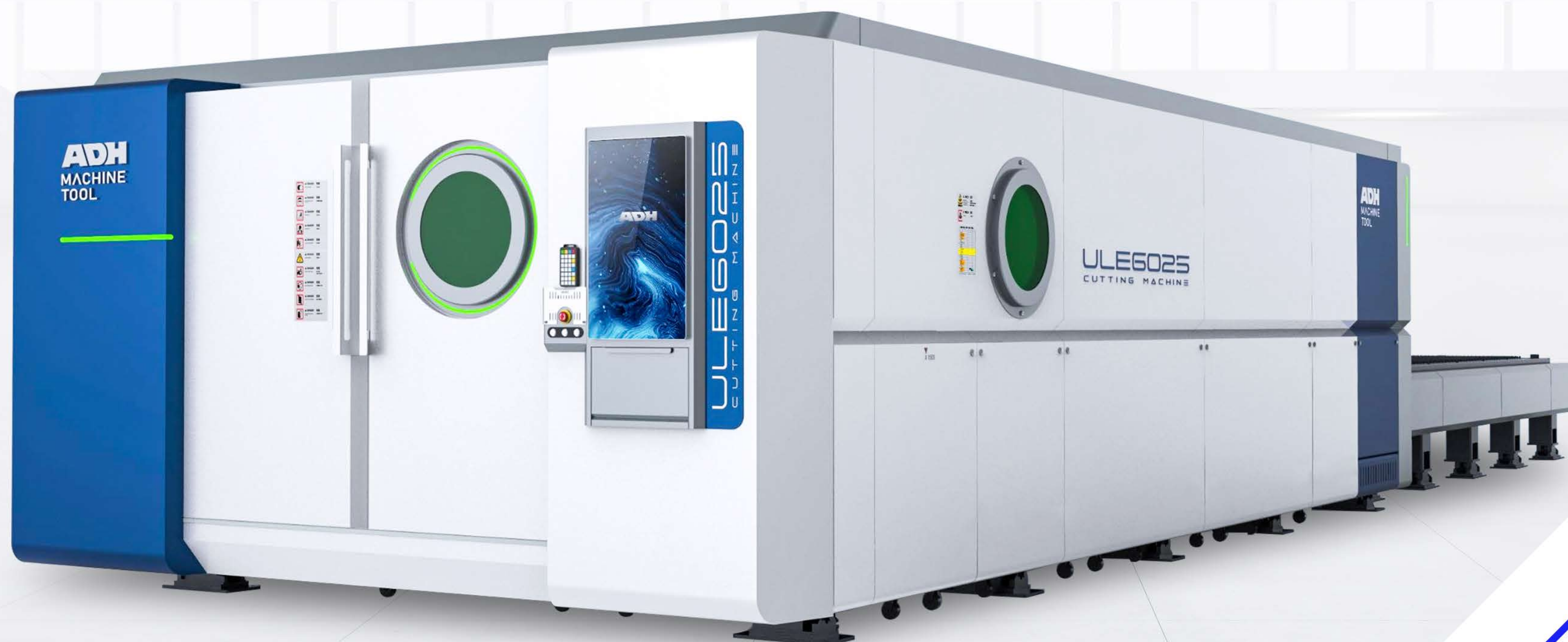


FIBER LASER CUTTER



OUR COMPANY

For the past 40 years since 1982, our machines have been used by more than 50000 customers around the world. Over the years, ADH has focused on innovative research and development, and has become a leading manufacturer of metal sheet metal forming, laser cutting equipment and intelligent solutions.

- 40 years manufacturing & servicing experience
- Export to over 80 countries
- More than 40 technicians
- Rank top 5 in China



EMPLOYEES

617



PRODUCTION BASES

3



ANNUAL SALES VOLUME

5000



SALES/SERVICE OFFICE

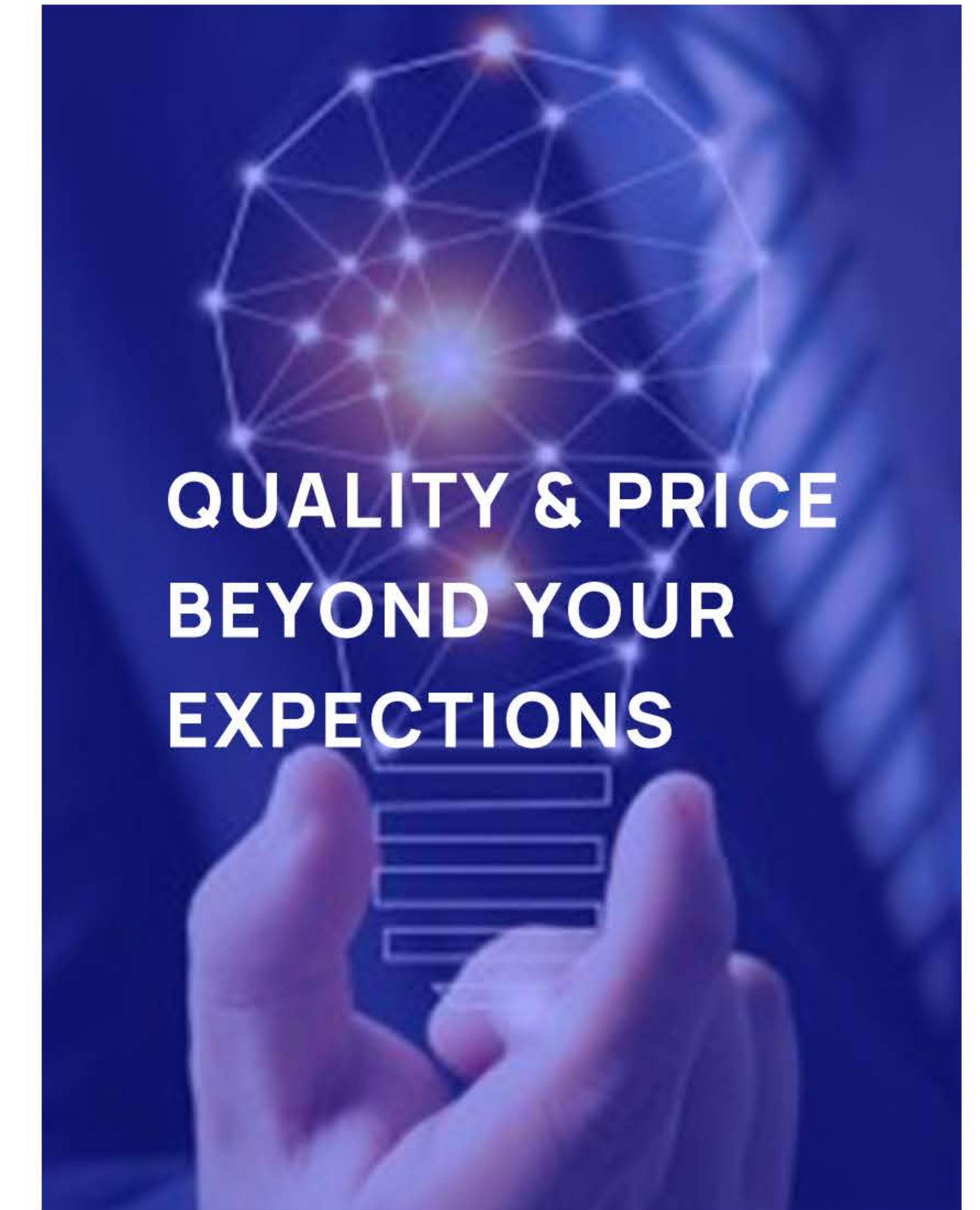
67



RELIABLE



**STRONG AT
AFTER-SALE SERVICES**



**QUALITY & PRICE
BEYOND YOUR
EXPECTATIONS**

FIBER LASER CUTTER

ULF SERIES

SINGLE TABLE

- Laser power : 1000 - 3000W
- Processing area : 3*1.5(m)/4*1.5(m)/4*2(m)/6*1.5(m)
- Max moving speed : 120m/min
- Max acceleration : 1.2g
- Positioning accuracy : $\pm 0.05\text{mm}$
- Repeat positioning accuracy : $\pm 0.02\text{mm}$
- Working voltage: 380V/50Hz
- Cooling: Water-cooled

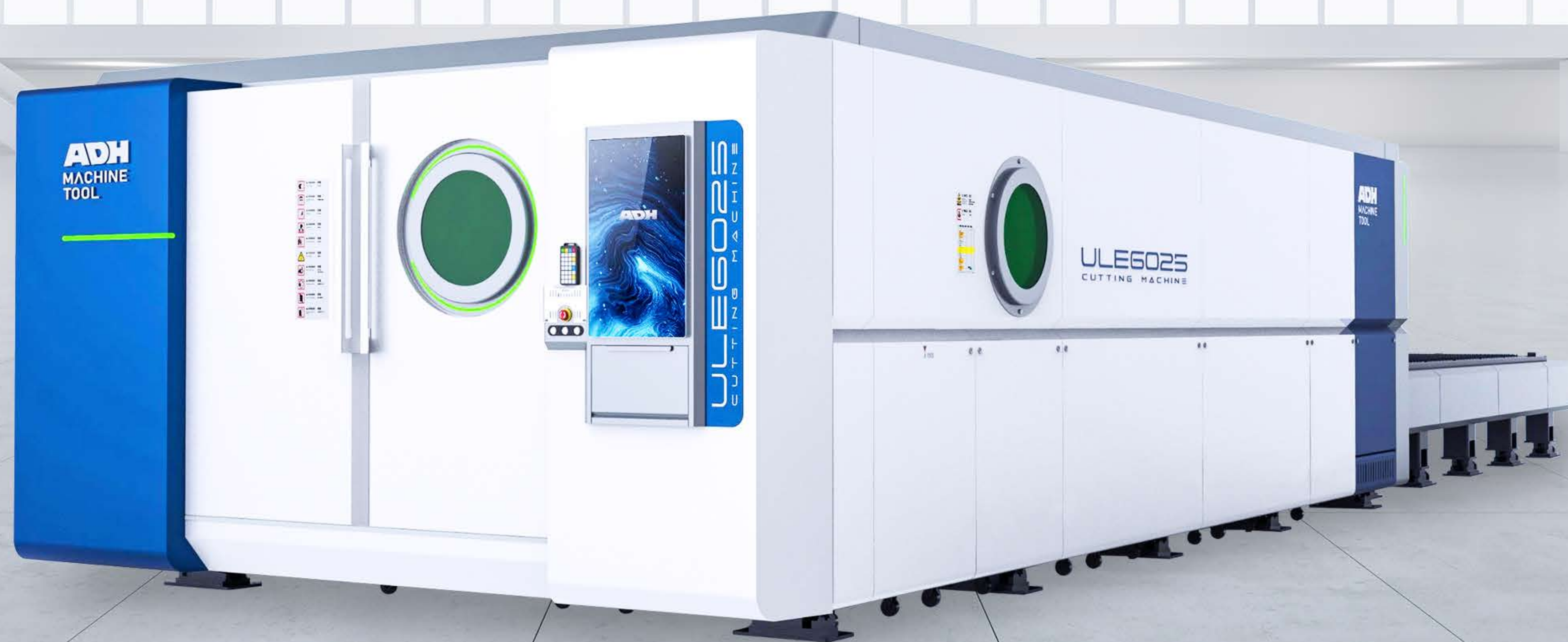


FIBER LASER CUTTER

ULE SERIES

DOUBLE TABLE

- Laser power : 1000 - 20000W
- Processing area : 3*1.5(m)/4*1.5(m)/4*2(m)
- Max moving speed : 120m/min
- Max acceleration : 1.2g
- Positioning accuracy : $\pm 0.05\text{mm}$
- Repeat positioning accuracy : $\pm 0.02\text{mm}$
- Working voltage: 380V/50Hz
- Cooling: Water-cooled



FIBER LASER CUTTER

ULFT SERIES

PLATE & TUBE CUTTING

- Laser power : 500 - 1500W
- Processing area : 3*1.5(m)/4*1.5(m)/6*1.5(m)
- Cutting diameter of circular pipe : 20mm~220mm
- Processing length of pipe : 3000m/4000m/6000m
- Max moving speed : 90m/min
- Max acceleration : 1.2g
- Positioning accuracy : $\pm 0.05\text{mm}$
- Repeat positioning accuracy : $\pm 0.02\text{mm}$
- Working voltage : 380v/50Hz
- Cooling mode : Water-cooled



FIBER LASER CUTTER

ULET SERIES

PLATE & TUBE CUTTING

- Laser power : 1000 - 20000W
- Processing area : 3*1.5(m)/4*1.5(m)/6*1.5(m)
- Cutting diameter of circular pipe : 20mm~220mm
- Processing length of pipe : 3000m/4000m/6000m
- Max moving speed : 90m/min
- Max acceleration : 1.2g
- Positioning accuracy : $\pm 0.05\text{mm}$
- Repeat positioning accuracy : $\pm 0.02\text{mm}$
- Working voltage : 380v/50Hz
- Cooling mode : Water-cooled



FIBER LASER CUTTER

FPC SERIES

TUBE & PIPE CUTTING

- Laser power : 1000 - 3000W
- Processing area : 3*1.5(m)/4*1.5(m)/6*1.5(m)
- Cutting diameter of circular pipe : 20mm~220mm
- Processing length of pipe : 3000m/4000m/6000m
- Max moving speed : 90m/min
- Max acceleration : 1.2g
- Positioning accuracy : $\pm 0.05\text{mm}$
- Repeat positioning accuracy : $\pm 0.02\text{mm}$
- Working voltage : 380v/50Hz
- Cooling mode : Water-cooled



STANDARD

- Switzerland Raytools Cutting Head
- Domestic Famous Brand Raycus Laser
- Taiwan YYC Rack and HIWIN Linear Rail
- Japan Shimpo Reducer
- Taiwan Delta Servo Motor and Drive
- Shanghai Cypcut Cutting System
- Japan SMC+AirTAG Pneumatic Component
- China Hanli Chiller
- Machine Platform and Accessories

OPTIONAL

- Germany Precitec Cutting Head
- Shenzhen WSX Cutting Head
- Germany BECKHOFF Control System
- Germany IPG Laser Resource
- USA N-light Laser Resource
- Voltage Stabilizer
- Japan Yaskawa Servo Motor and Drive
- Alpha Reducer

FIBER LASER CUTTER

Steel plate plug welder rack, with heat treatment to avoid frame deformation within 20 years.





AUTO FOCUS

The laser cutting head with auto sensor function is from Switzerland, which is suitable for different focal lengths and be controlled by the system. For the sheet metal with different thicknesses, the focal point will be automatically adjusted in cutting process to achieve the best cutting effect.





IPG 1000W



IPG 2000W



IPG 3000W



IPG 8000W



IPG 12000W



IPG 15000W



IPG 20000W



IPG 1000W



N-LIGHT 1200W/1500W/3000W/5000W/10000W

CYPCUT CONTROL SYSTEM

Adopts professional Cypcut CNC control software which is powerful, simple, and compatible. It can be compatible with NC documents, DXF, PLT, AI, Gerber and other graphics software formats.

AUTOMATIC

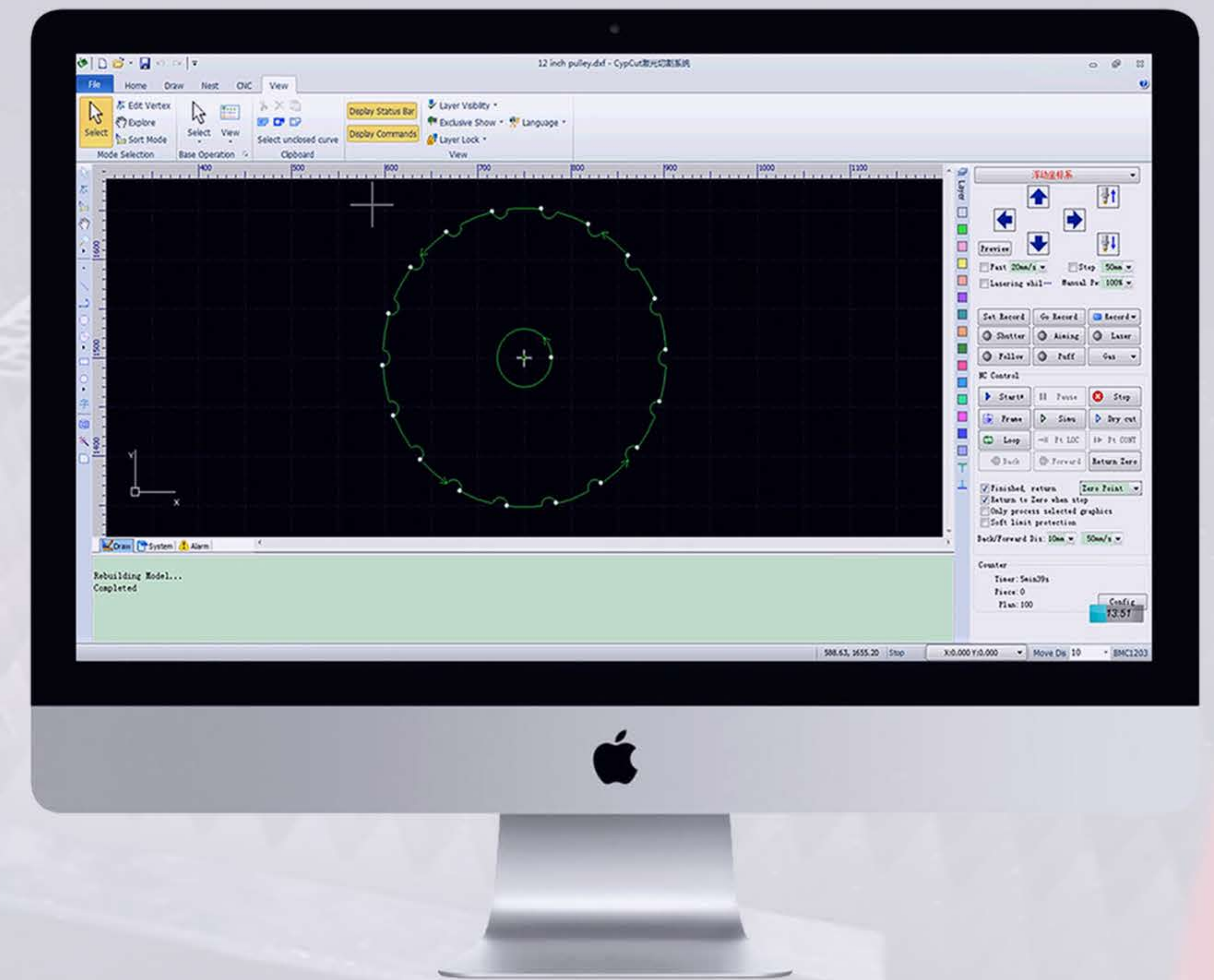
Realize optimizing automatically includes removing duplicate lines, merging contiguous lines, removing tiny graphics, distinguishing between internal and external modes, and sorting, etc...

INTELLIGENT

Realize the intelligent layout of graphics clipping, support multiple graphics input, automatically optimize the cutting sequence, intelligently search the edges, and automatically positioning

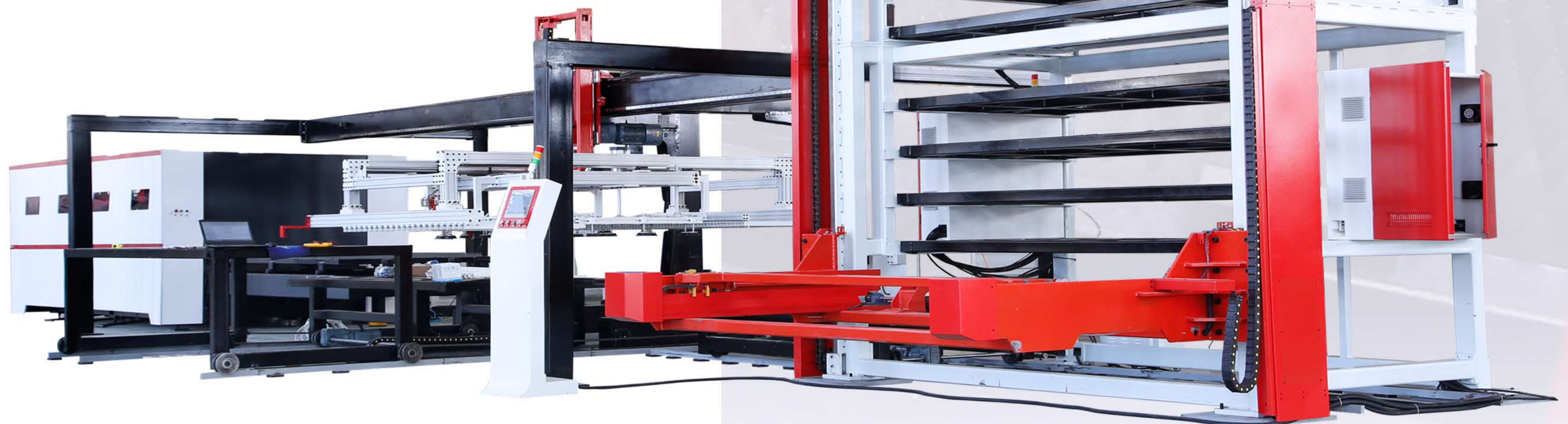
EFFECTIVE

Adopts the best logic programme and software, supplying the great operation experience, which could increase the metal sheet utilization rate effectively.

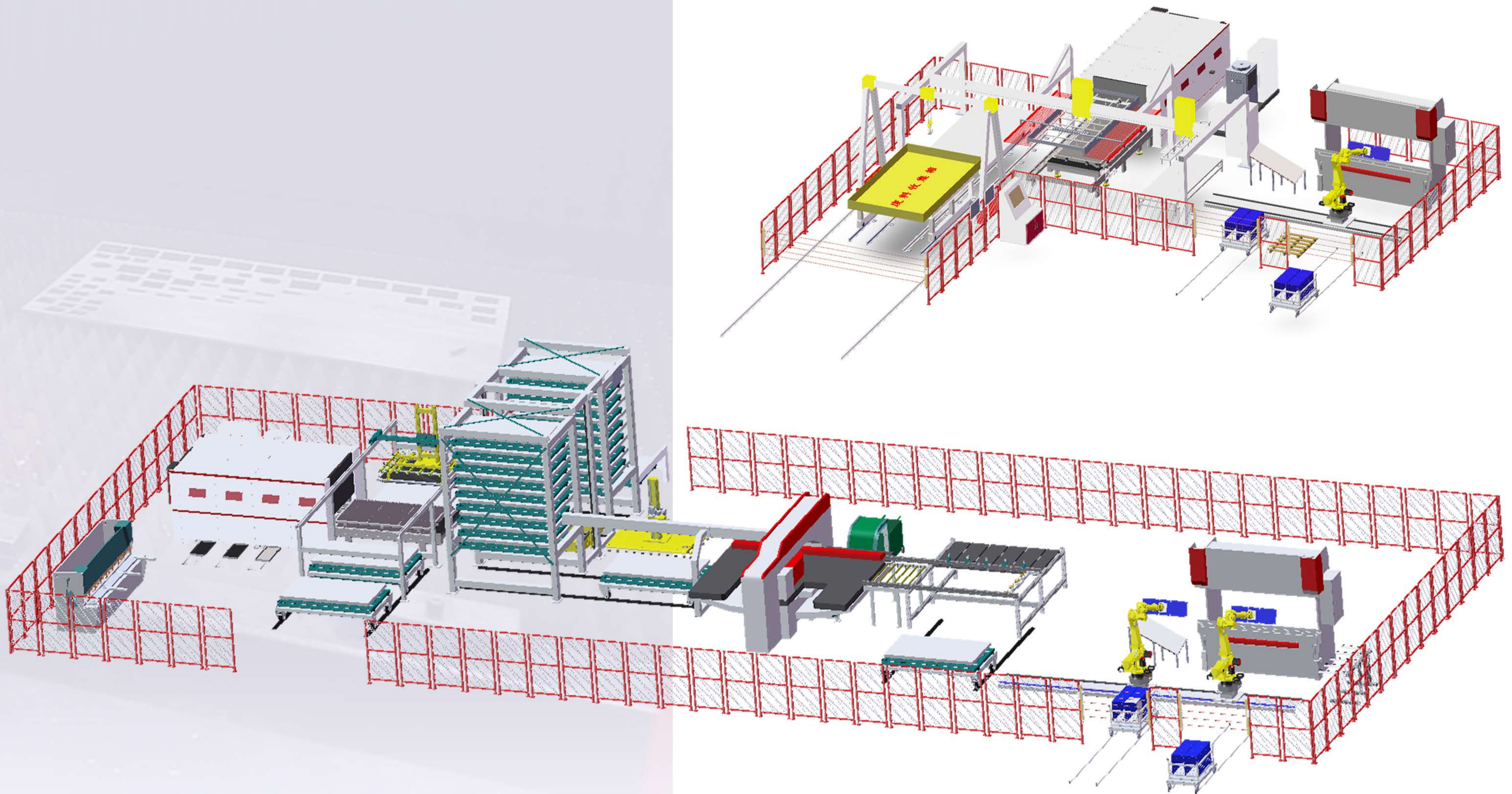


FLEXIBLE PRODUCTION LINE

- Automated sheet loading, cutting and blanking. And add a multi-layer library system,
- It can process batches of various varieties and specifications.
- Communication and data sharing can be achieved with the production management system.
- The workpiece sorting system can be selected as needed.
- Significantly improve processing efficiency and reduce overall production costs.



FLEXIBLE PRODUCTION LINE



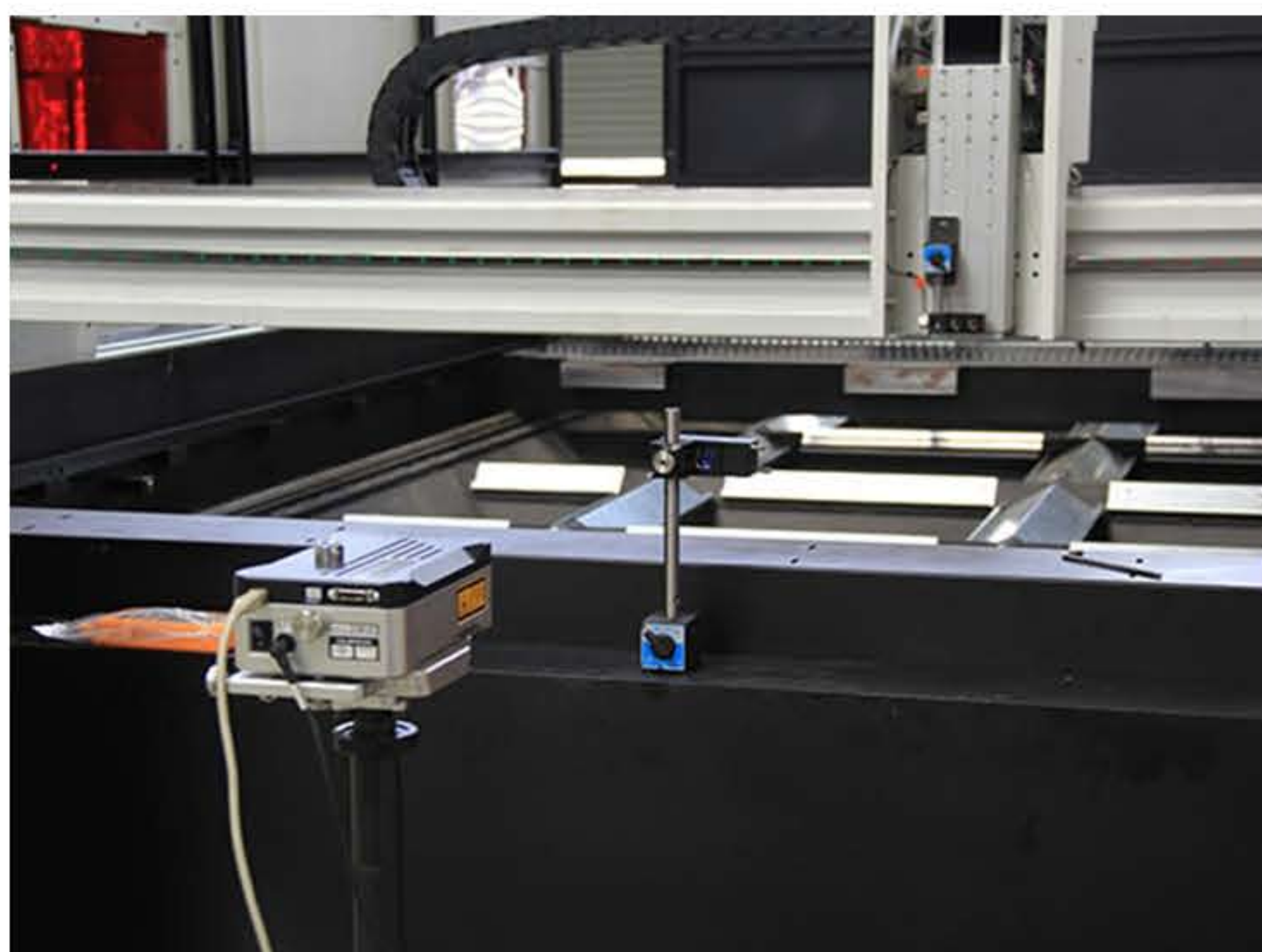


More flexible,
more accurate
and higher quality

It is applicable to various kinds of materials processing, easy to process different kinds of work pieces.

INTERFEROMETRIC DETECTION

To detect the accuracy of the X / Y stroke



DIAL GAUGE DETECTION

To detect the parallelism, flatness and plane precision.



PLUG GAUGE DETECTION

To detect the accuracy of the screw hole between the bed



AUTOCOLLIMATOR DETECTION

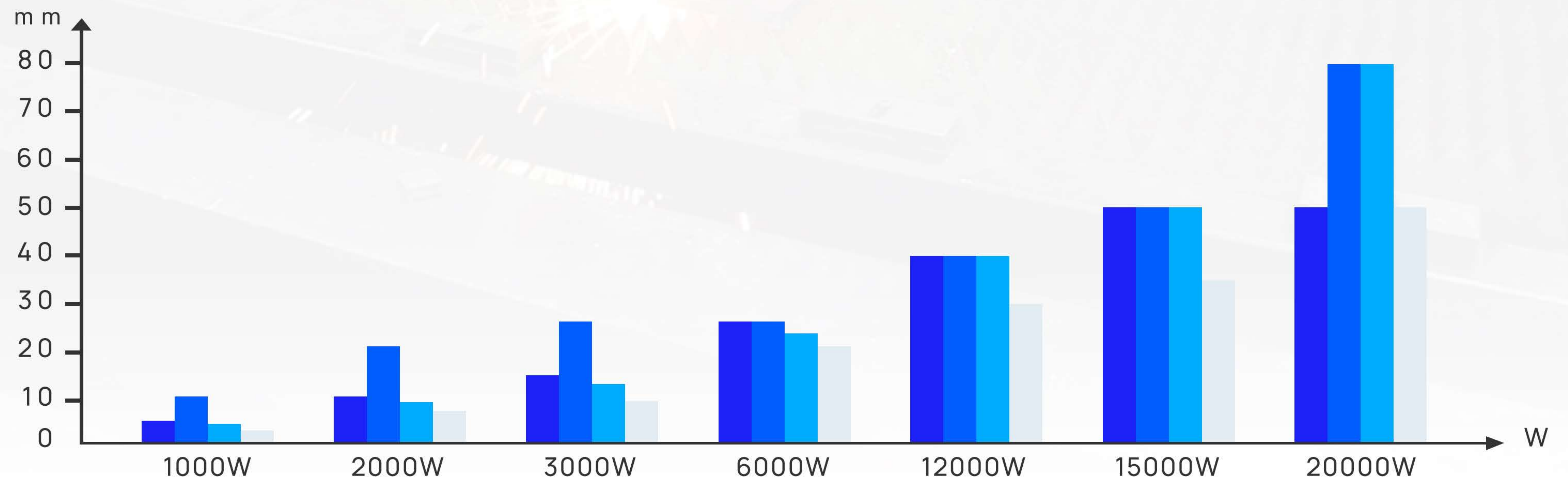
To detect the verticality and flatness.



QUALITY CONTROL

LASER CUTTING CAPACITY

- Stainless Steel
- Carbon Steel
- Aluminum Alloy
- Brass Alloy



SPECIFICATIONS



Model	ULF/ULE	ULFT/ULET
Laser power	1500W/3000W/6000W/12000W 6000W/12000W/15000W/20000W	1500W/3000W/6000W
Cutting range	3*1.5(m)/4*1.5(m)/6*1.5(m)/4*2(m)/6*2(m) 6*2.5(m)/8*2.5(m)/12*2.5(m)	3*1.5(m)/4*1.5(m)/6*1.5(m)/6*2.0(m)/6*2.5(m)
Maximum size of chuck	/	220mm/350mm
Plate/tube cutting length	/	3000mm/4000mm/6000mm
Maximum moving speed	120m/min	90m/min
Maximum acceleration	1.2g	1.2g
Positioning accuracy	±0.05m	±0.05m
Repeated positioning accuracy	±0.02m	±0.02m
Operating voltage	380V/50Hz	380V/50Hz
Cooling method	water-cooled	water-cooled

Model	FPC
Pipe Dimensions	Diameter: 20mm-200mm Length: 6m/9m (320mm Optional)
Tube Category	Round,Square,Oval,Rectangular,Triangle,ect.
Laser Power	1000W-6000W
Max. Acceleration	0.8G
Rotary Speed	80r/min
Positioning Accuracy	±0.05mm
Repositioning Accuracy	±0.05mm
Total Weight	Over 13T
Total Power Consumption	18.3KVA-41KVA
Power Supply	380V50Hz/380V60Hz/220V60Hz
Dimensions	12246*5388*2355mm



CONTACT US

ANHUI DONGHAI YUXIANG IMPORT&EXPORT CO.,LTD

Tel: +86-555-6760666

Email: info@adhmt.com

Web: www.adhmt.com

Adress: NO.1259,Liaohe Road,Xinshi Industrial Zone,
Bowang District, Maanshan City