

IRONWORKER MACHINE

Q35Y



Xinshi Industrial Zone, Bowang District, Ma' anshan, China

+86-555-6760666 | +86 136 0555 9170

info@adhmt.com

www.adhmt.com



CONTACT US

COMPANY PROFILE

Established in 2002, ADH Company is situated in Ma'anshan City, Anhui Province, just 30 kilometers from Nanjing Lukou Airport. Our expansive 2,000,000 square meter facility specializes in manufacturing press brakes, hydraulic shearing machines, laser cutting machines (including automatic production units), CNC turret punches, intelligent flexible bending centers, and sheet metal automation equipment. As a leading high-tech manufacturer prioritizing R&D and innovation, we hold numerous patents and industry certifications.

2002

Founded

6000 +

Annual Production

120 +

R&D Personnel

100 +

Exported Countries



Mission

We are committed to research and development, improving product and service quality, in order to establish a globally renowned sheet metal manufacturing machinery center.



Vision

Our goal is to become a highly respected sheet metal support service provider, earning the trust of customers and the pride of employees.



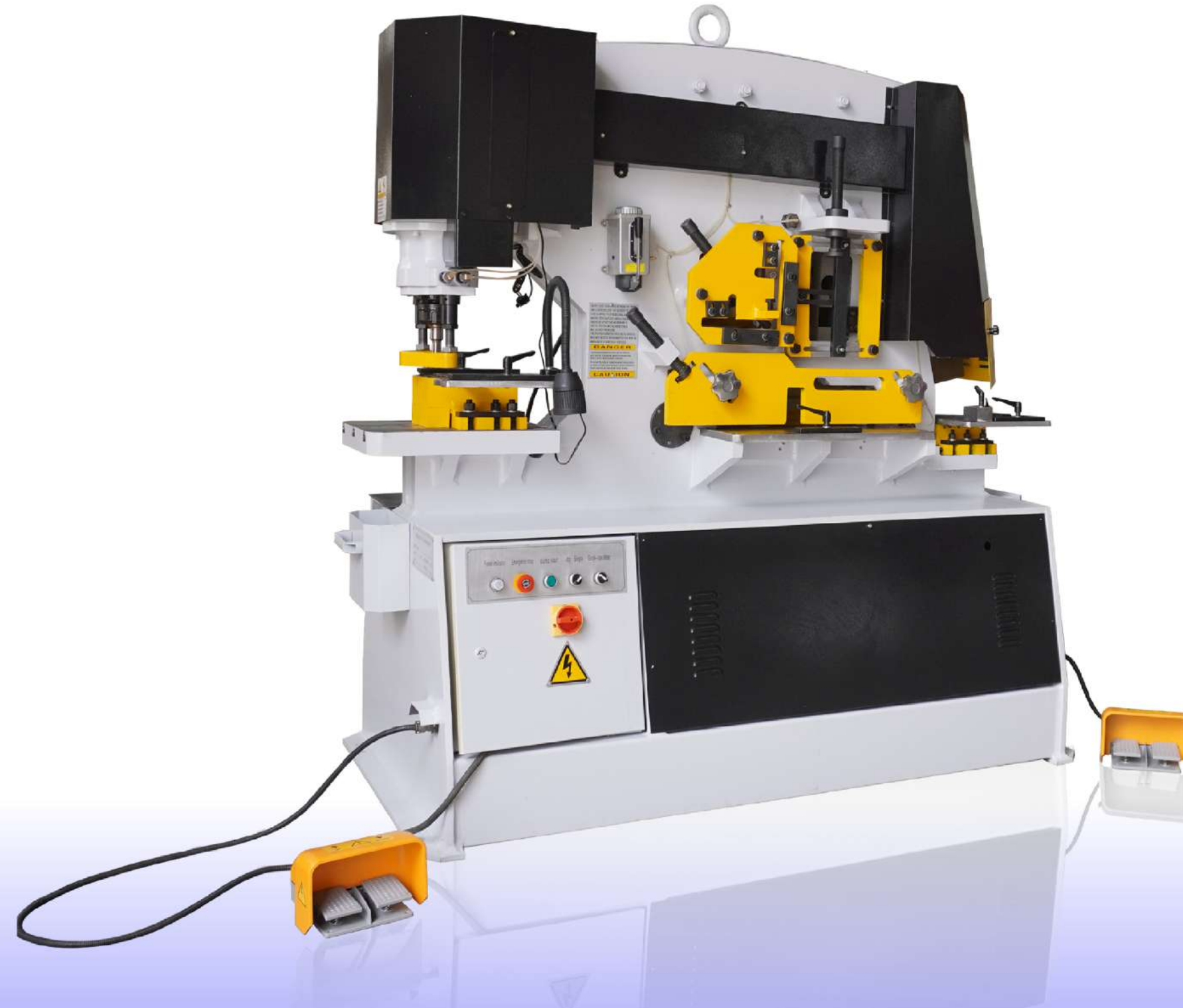
Values

Innovation, Lean Manufacturing, Integrity, Win-Win.

IRONWORKER MACHINE

Hydraulic

Q35Y Series



- Punching, shearing, notching and bending, saving space and equipment.
- Delivers fast, powerful processing for various materials and profiles.
- Ensures accurate, clean results with consistent quality.
- Built for reliable operation in tough industrial conditions.
- Simple controls and quick setup minimize training and downtime.

PRODUCT DETAILS



Punching Station

- Create precise holes in various materials with interchangeable upper and lower molds for flexibility.
- Ideal for punching large angle and channel steel structures with consistent accuracy.

Notching Station

- Perfect for corner notching and other angled cuts. Versatile for various industrial applications.



Shearing Station

- Achieve rapid cutting of flat steel, iron plates, and other sheet materials.
- Delivers clean cuts consistently, improving throughput without compromising quality.





Angle Cutting Station

- Makes 45° cuts quickly and efficiently on angle steel, with diamond blades ensuring ultra-smooth finishes.



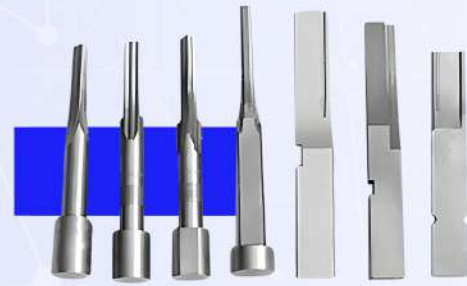
Bar Cutting Station

- Processes a wide range of profiles, including square, round, angle, channel, and T-bars.



IRONWORKER MACHINE

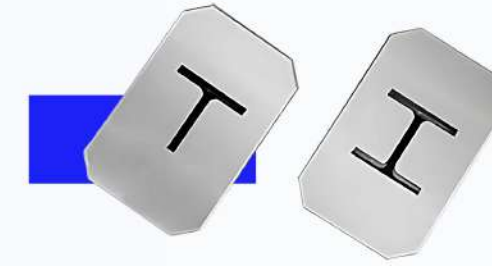
ARTIFACTS DIAGRAM SHOWS



Punching Mould



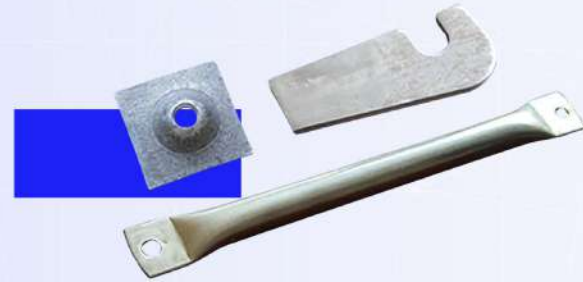
Customized Puncher



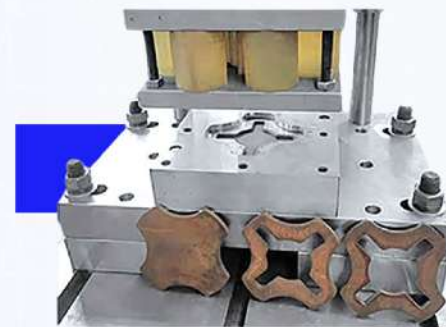
T-steel H-steel



Cutting Mould



Flattening Punching



Different Forming Die



Stretch Forming Die



Channel Steel Blanking Die

Specifications

Q35Y Series

SPECIFICATIONS								
Profile	Round Bar	Square Bar	Equal Angle		T-Bar		Joist	Channel
			90°Shearing	45°Shearing	90°Shearing	45°Shearing		
Section View								
Q35YL-60	45	40x40	120x120x12	50x50x5	120x120x12	60x60x8	126x74x5	126x53x5
Q35YL-90	50	50x50	140x140x12	70x70x7	140x140x12	70x70x10	160x86x6	160x60x5
Q35YL-120	60	50x50	160x160x14	80x80x7	160x160x14	80x80x10	200x102x9	200x75x9
Q35YL-160	65	55x55	180x180x16	80x80x10	180x180x16	80x80x10	280x124x10	280x86x11
Q35YL-200	70	60x60	200x200x18	100x100x10	200x200x18	80x80x10	300x126x11	300x89x12
Q35YL-250	75	65x65	200x200x18	120x120x16	200x200x18	80x80x10	320x130x10	300x92x12

Specifications

Q35Y Series

SPECIFICATIONS							
Model	Q35Y-50	Q35Y-60	Q35Y-90	Q35Y-120	Q35Y-160	Q35Y-200	Q35Y-250
Pressure(T)	50	60	90	120	160	200	250
Max. Shearing Thickness(mm)	12	16	20	25	30	40	50
Material Strength(N/mm²)	≤450	≤450	≤450	≤450	≤450	≤450	≤450
Shearing Angle(°)	7°	7°	8°	8°	8°	8°	8°
Max. Shearing Size per Stroke (Thickness x Width) (mm)	300×12	16×250 8×400	20×330 10×480	25×330 16×600	30×335 20×600	35×400 25×700	40×400 30×750
Ram Stroke(mm)	35	80	80	80	80	80	80
Strokes per Minute	10-18	9-25	12-28	12-28	12-28	10	10
Throat Depth(mm)	115	300	355	400	600	600	600
Max. Punching Thickness(mm)	12	16	20	25	28	35	40
Max. Punching Diameter(mm)	25	25	30	35	28	40	40
Main Motor(KW)	4	5.5	7.5	11	11/15	15/18.5	18.5/22
Overall Dimensions (L x W x H) (mm)	950×550×1800	1640×730×1770	1860×800×1900	2355×960×2090	2680×1040×2300	2970×1240×2350	3000×1440×2450