

# SHEARING MACHINE

QC12K



Xinshi Industrial Zone, Bowang District, Ma' anshan, China

+86-555-6760666 | +86 136 0555 9170

info@adhmt.com

www.adhmt.com



# CONTACT US



# COMPANY PROFILE

Established in 2002, ADH Company is situated in Ma'anshan City, Anhui Province, just 30 kilometers from Nanjing Lukou Airport. Our expansive 2,000,000 square meter facility specializes in manufacturing press brakes, hydraulic shearing machines, laser cutting machines (including automatic production units), CNC turret punches, intelligent flexible bending centers, and sheet metal automation equipment. As a leading high-tech manufacturer prioritizing R&D and innovation, we hold numerous patents and industry certifications.

**2002**  
Founded

**6000 +**  
Annual Production

**120 +**  
R&D Personnel

**100 +**  
Exported Countries



## Mission

We are committed to research and development, improving product and service quality, in order to establish a globally renowned sheet metal manufacturing machinery center.



## Vision

Our goal is to become a highly respected sheet metal support service provider, earning the trust of customers and the pride of employees.



## Values

Innovation, Lean Manufacturing, Integrity, Win-Win.



# SHEARING MACHINE

Swing Beam

QC12K Series



- Steel plate welded structure, hydraulic transmission, nitrogen cylinder return, convenient operation, reliable performance, beautiful appearance.
- Edge adjustment signs, adjusts lightly and quickly, continuously variable transmission.
- Lighting device on the line, and continuously variable adjustment of upper carrier itinerary.
- Fence type safety protection device.
- Back gauge adopts Backgauge uses linear guide rails and ball screws, with low noise and high precision.

# PRODUCT DETAILS

## Backgauge

- The heavy-duty backgauge design of the product enhances collision resistance and minimizes deformation, ensuring durability and precision in cutting operations.
- The convenient backgauge rack facilitates easy retrieval of cutting materials, streamlining workflow efficiency.
- The availability of both manual and automatic backstop lifting functions caters to diverse cutting needs, accommodating longer materials with ease.



## Main Motor

- Our main motor options feature renowned international brands like Siemens and popular Chinese brands like Wannan, ensuring quality and reliability across the board.
- Voltage customization is a key feature, offering tailored solutions including 3-phase options at 220V, 380V, and 415V, meeting diverse operational needs with precision.



## Control System

- The plate shearing machine features the E21S numerical control system from ESTUN, known for precision and reliability.
- The ESTUN E21S system allows for automated adjustment of cutting angle and blade clearance, enhancing operational efficiency.
- With the E21S from ESTUN, the plate shearing machine ensures optimal performance through precise control of cutting parameters.

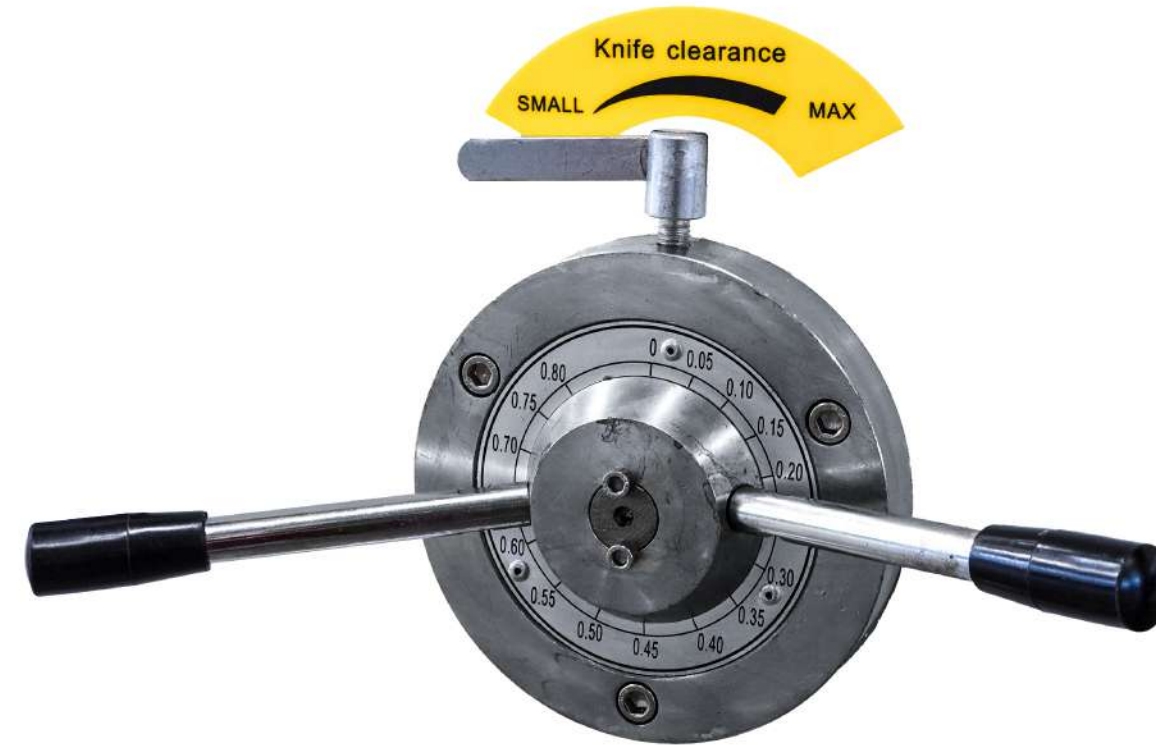






## Ball Integrated Front Tables

- The ball-type front support minimizes friction, enhancing plate smoothness, a key feature of the product.
- Improved feeding convenience and speed boost cutting efficiency significantly, a standout advantage of this innovation.



## Adjusting Device

- The product allows for manual adjustment of the blade gap, providing users with precise control over cutting depth and accuracy.

## Lubrication Device (Optional)

- Two model options available: automatic and manual, offering customers choice and flexibility.
- Enhanced convenience and speed for users, catering to varying preferences efficiently.
- Streamlined selection process for customers, ensuring ease of use and satisfaction.



## Hydraulic Valve

- Utilizes Rexroth hydraulic valve block for superior hydraulic performance, enhancing reliability and efficiency.
- Oil pressure overload protection system minimizes oil leakage and valve jamming, ensuring uninterrupted machine operation.
- Real-time oil pressure monitoring feature maintains smooth oil circuit operations, guaranteeing stable equipment performance.

## Feeding Port

- The feed port design of our machine complies with international safety standards, guaranteeing secure and dependable operation.
- The machine provides a precise feeding height range, from the sheet thickness to sheet thickness plus 20-25mm, with adjustable height screws for convenient height customization.
- Enhanced operator safety is ensured with the inclusion of a front fence and side guardrail in our machine's design.







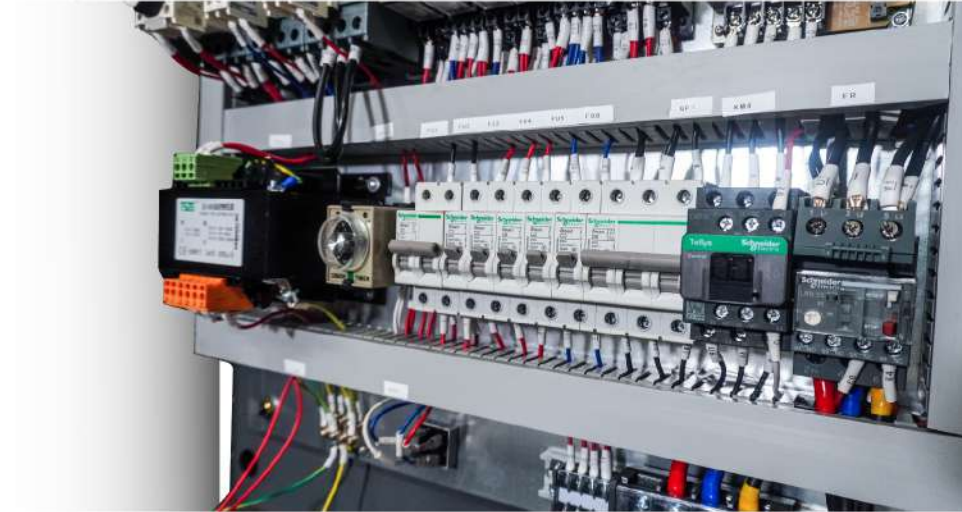
## Cutting Line Illumination

- The standard alignment device incorporates machine light projection for precise cutting straightness, eliminating the need for manual line drawing.
- This technology enhances cutting accuracy by projecting a line shadow onto the sheet, ensuring high-quality results.
- It offers a modern alternative to traditional cutting methods, improving efficiency and precision in the cutting process.



## Rear Protection Device

- Photoelectric technology actively detects and prevents potential hazards.
- Targeted Finger Protection: Specifically safeguards fingers from harm, minimizing injury risk during operation.



## Electric Components

- High-quality electrical components ensure stability and durability, promising a long service life for the machine.
- By incorporating premium electrical components, the machine is designed for lasting durability and stable operation, setting it apart in terms of reliability and longevity.



## Cutting Blade

- The rectangular blade design of the product offers versatility with four cutting edges, providing enhanced efficiency in cutting operations.
- Its long service life ensures durability, reducing the need for frequent replacements and maintenance costs.



# OPTIONAL



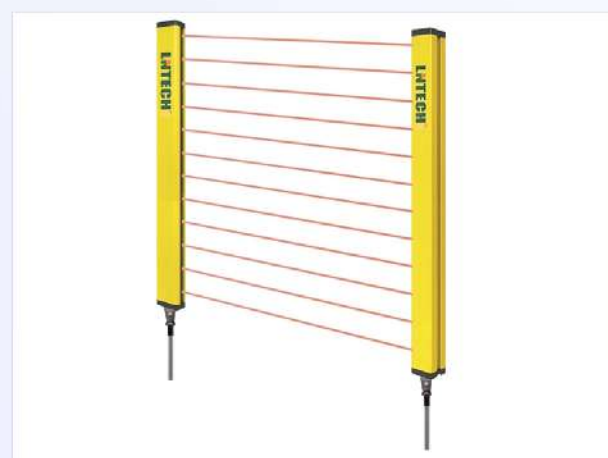
## Hydraulic Oil Cooling Device

- Enables uninterrupted operation in high-temperature environments, ensuring machine efficiency and reduced downtime.
- Extends machine usability during prolonged continuous use, providing stable hydraulic performance and reliability.



## Pneumatic Rear Support

- The machine provides the convenience of cutting wide sheets with a single key closure feature, enhancing user efficiency and ease of operation.
- Customers can enjoy the practicality of easily handling wide sheets and securely closing the machine with just one key, streamlining workflow and ensuring convenience.



## LNTECH Laser Protection

- LNTECH's optional Laser Protection enhances personal safety with features like strong anti-electromagnetic and anti-light interference capabilities, ensuring reliable operation in various environments.

# CONTROLLER



## ESTUN E21S

- Backeauge control
- Control ordinary motor or frequency converter
- Intelligent positioning
- Dual programmable digital output
- Workpiece counting
- 40 program storage, 25 steps per program
- One-sided positioning
- Retraction function
- One-click parameter backup and recovery
- Metric/imperial system



## ESTUN E200PS

- High-definition LCD display, 128x64 pixels.
- Control of backgauge.
- Control of blade gap.
- Control of cutting stroke.
- Synchronization display of actual backgauge position with programmed value.
- Cutting count.
- 100 program steps.
- Panel-mounted installation.
- Servo control / Variable frequency speed control / Dual-speed AC motor control.



## DELEM DAC-310T

- Panel based housing
- Bright LCD screen
- Back gauge control
- Retract function
- Cutting angle or gap control
- Stroke length limitation
- Manual movement of axes
- Stock count



# Specifications

## QC12K Series



SPECIFICATIONS									
Model	Cutting Thickness	Cutting width	Oil Tank	Stroke	Backgauge range	Cutting Angle	Main Power	Weight	Dimensions
Unit	mm	mm	L	times/min	mm	°	KW	Ton	L×W×H mm
4*2500	4	2500	140	33	20-650	1.5	7.5	4	3035*1570*1720
4*3200	4	3200	190	15	20-650	1.5	7.5	5.5	3750*1640*1850
4*4000	4	4000	190	10	20-800	1.5	7.5	7.5	4550*1970*1900
4*5000	4	5000	320	8	20-800	1.5	7.5	13.5	5700*1900*2000
4*6000	4	6000	440	8	20-800	1.5	15	17	6500*2460*2250
6*2500	6	2500	190	17	20-650	2	7.5	5.5	3050*1650*1900
6*3200	6	3200	190	12	20-650	1.5	7.5	6.5	3750*1650*1800
6*4000	6	4000	190	9	20-800	1.5	7.5	8.7	4550*2000*1950
6*5000	6	5000	320	7	20-800	1.5	15	15.5	5540*2450*2300
6*6000	6	6000	440	5	20-800	1.5	15	19.8	6545*2470*2500
8*2500	8	2500	190	14	20-650	2	11	5.8	3060*1650*1800
8*3200	8	3200	190	10	20-650	1.5	11	6.8	3760*1650*1800
8*4000	8	4000	190	9	20-800	1.5	15	8.8	4560*1960*1920
8*5000	8	5000	320	8	20-800	1.5	18.5	16	5600*2360*2180
8*6000	8	6000	440	6	20-800	1.5	18.5	21.5	6600*2450*2500
10*2500	10	2500	190	10	20-800	2	15	7	3050*1960*1920
10*3200	10	3200	190	9	20-800	1.5	15	8.5	3800*1960*1920

SPECIFICATIONS									
Model	Cutting Thickness	Cutting width	Oil Tank	Stroke	Backgauge range	Cutting Angle	Main Power	Weight	Dimensions
Unit	mm	mm	L	times/min	mm	°	KW	Ton	L×W×H mm
10*4000	10	4000	400	8	20-800	1.5	22	12	4700*2100*2200
10*6000	10	6000	440	6	20-800	1.5	22	28	6600*2100*2300
12*2500	12	2500	400	12	20-800	2	22	10.3	3170*2150*2180
12*3200	12	3200	400	10	20-800	2	22	11.6	3800*2150*2180
12*4000	12	4000	400	8	20-800	1.75	22	13.8	4700*2285*2180
12*5000	12	5000	440	6	20-800	2	22	19.5	5800*2450*2400
12*6000	12	6000	440	5	20-800	2	22	32.5	6600*2600*2700
12*8000	12	8000	580	4	20-800	1.75	22	50.5	8600*3250*3200
16*2500	16	2500	400	11	20-800	2.5	22	11	3245*2290*2180
16*3200	16	3200	400	10	20-800	2	22	12.6	3870*2300*2180
16*4000	16	4000	600	8	20-800	1.75	22	17.8	4705*2575*2200
16*5000	16	5000	600	6	20-800	2.5	30	24.8	5900*2600*2700
16*6000	16	6000	600	5	20-800	2.5	30	35	6600*2700*2900
20*2500	20	2500	500	8	20-800	2.5	30	14.3	3300*2580*2300
20*3200	20	3200	500	7	20-800	2.5	30	16	4150*2600*2500
20*4000	20	4000	550	5	20-800	2.5	30	23	4850*2600*2800
25*2500	25	2500	550	7	20-800	3	37	19	3200*2700*2900
25*3200	25	3200	600	5	20-800	3	37	24	4200*2700*3000